

# perma GREASE LUBRICATION WITH TUBE

## Installation examples

**perma STAR VARIO /  
perma STAR CONTROL**  
max. 5 m\*

All metal to metal connections must be glued together with Loctite® 243™ (Art. No. 110278).



**perma NOVA**  
max. 2 m\*



**perma FLEX  
perma FLEX PLUS**  
max. 2 m\*



**perma FUTURA  
perma FUTURA PLUS**  
max. 1 m\*



**perma CLASSIC**  
max. 1 m\*



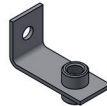
Art. No.  
109420



Art. No.  
101427

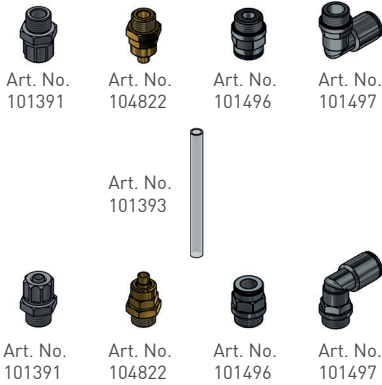


Art. No.  
109663



Art. No.  
109685

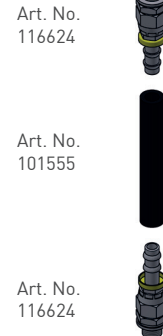
**< +80 °C**



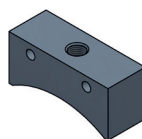
**< +260 °C**



**< +100 °C**



**< +260 °C**



Art. No.  
101444

\* depending on lubricant and ambient temperature

## Accessories

Art. No.	Description
----------	-------------

### Support flanges

101427	Support flange FLEX G1/4 male x G1/4 female (brass / plastic)
109420	Support flange STAR G1/4 male x G1/4 female (brass / plastic)

### Mounting Brackets

109685	Mounting Bracket CLASSIC, FUTURA, FLEX, NOVA 1-point G1/4 female (stainless steel)
109663	Mounting Bracket STAR Standard Duty 1-point G1/4 female (stainless steel)

### Tube up +80 °C

101393	Tube up to +80 °C oØ 8 mm x iØ 6 mm (PA)
101391	Tube connector G1/4 male for tube oØ 8 mm (alu / plastic)
104822	Tube connector G1/4 male for tube oØ 8 mm (brass)
101496	Tube connector G1/4 male for tube oØ 8 mm straight (brass nickel-plated)
101497	Tube connector G1/4 male for tube oØ 8 mm 90° - rotary type (brass nickel-plated)

### Tube up to +260 °C

101394	Tube up to +260 °C oØ 8 mm x iØ 6 mm (PTFE)
104867	Tube connector G1/4 male for tube oØ 8 mm (stainless steel)

### Heavy Duty hose up to +100 °C

101555	Heavy Duty hose up to +100 °C oØ 16 mm x iØ 9.5 mm (with NBR lining and fabric insert)
116624	Hose connector G1/4 male for hose iØ 9.5 mm - push-lock (steel, zinc-plated)

### Tube up to +260 °C

113864	Tube up to +260 °C oØ 11 mm x iØ 8 mm 500 mm (PTFE / stainless steel)
101549	Tube up to +260 °C oØ 11 mm x iØ 8 mm 1000 mm (PTFE / stainless steel)
101550	Tube up to +260 °C oØ 11 mm x iØ 8 mm 1500 mm (PTFE / stainless steel)
104868	Cutting ring coupling R1/4 male for oØ 8 mm straight (stainless steel)

### Reducers

104833	Reducer G1/8 male x G1/4 female (brass)
104876	Reducer M6 male x G1/4 female (stainless steel)
104838	Reducer M8x1 male x G1/4 female (brass)
104840	Reducer M10x1 male x G1/4 female (brass)

### Lubrication pocket

101444	Lubrication pocket for gear lubrication
--------	---

For more connecting parts please see our perma catalog at [www.perma-tec.com](http://www.perma-tec.com)